

MICRO SWITCH

FREEMONT ILLINOIS, U.S.A
A DIVISION OF HONEYWELL
FED. MFG. CODE 91929

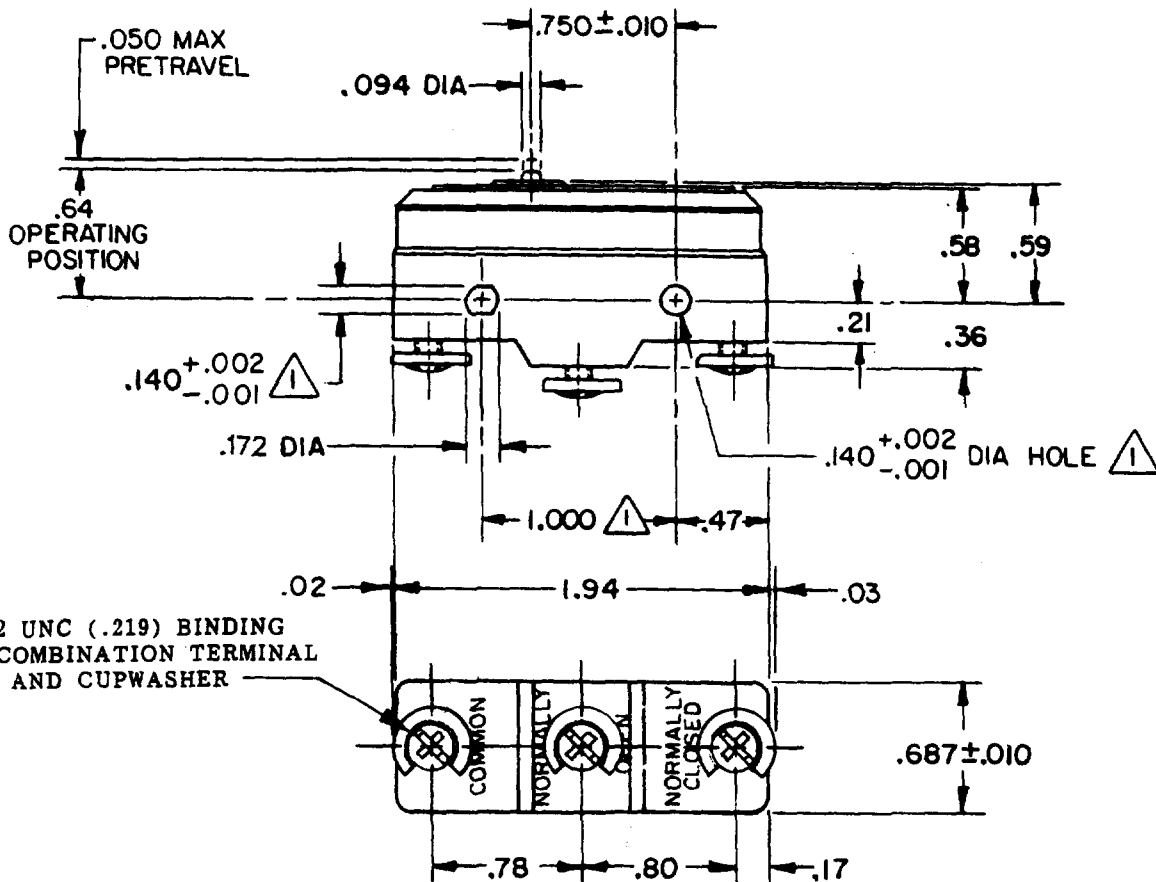
SWITCH-BASIC

CATALOG LISTING

BA-2R-A4

ABF5000

BA-2R-A4
 PAGE 1 OF 1
M
 DRAWING NUMBER
 ISSUE 10
 REVISIONS
 A OBS DWG 27 JUN 86
 B PR-14878 RE-INST 28 JUN 86
 C COB9010 28 JUL 89
 D CO-73287-G 20 OCT 93
 E CO-77588 29 MAR 94
 F CO93346 DLT 23 SEP 98
 G 0018656 NM 20 FEB 06
 T A D 28 JUN 86 CHECK K A G 20 JUN 98 CHECK K A G 20 FEB 06
 FORMTEK
 FO-52848-A
 DRAWN

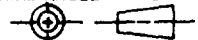


3X 8-32 UNC (.219) BINDING HEAD COMBINATION TERMINAL SCREW AND CUPWASHER

- NOTES**
- 1 MOUNTING HOLES WILL ACCEPT PINS OR SCREWS OF .139 MAX DIA ON 1.000 ± .002 CENTERS

THIS DRAWING COVERS A PROPRIETARY ITEM AND IS THE PROPERTY OF MICRO SWITCH, A DIVISION OF HONEYWELL. THIS DRAWING IS NOT TO BE COPIED OR USED WITHOUT THE APPROVAL OF MICRO SWITCH.

THIRD ANGLE PROJECTION



CHARACTERISTICS	
OPERATING FORCE	-----14-22 OZ
RELEASE FORCE	-----10 OZ MIN
DIFFERENTIAL TRAVEL	---.0020-.0075
OVERTRAVEL	-----.010 MIN

ELECTRICAL DATA	
CONTACT ARRANGEMENT S P D T	
L145	20A 125, 250 OR 480 VAC 10A 125 VAC "L" 1 HP 125 VAC, 2 HP 250 VAC 1/2A 125 VDC, 1/4A 250 VDC 2A 600 VAC
L288 L308 L315	
20(3)A 250V ~ T85 5E4	

SCALE FULL			
DO NOT SCALE PRINT			
TOLERANCES			
APPLY TO DESIGN UNITS. CONVERSIONS ARE ONLY FOR REFERENCE. UNLESS NOTED, TOLERANCES ARE 2			
NO PLACES	X	1/64	X.X
ONE PLACE	X.X	0.0010	X.XX
TWO PLACES	X.XX	0.0001	X.XXX
THREE PLACES	X.XXX	0.00001	X.XXXX
ANGLES			
DESIGN UNITS		WEIGHT .063 LB	